

Graduate Student Results

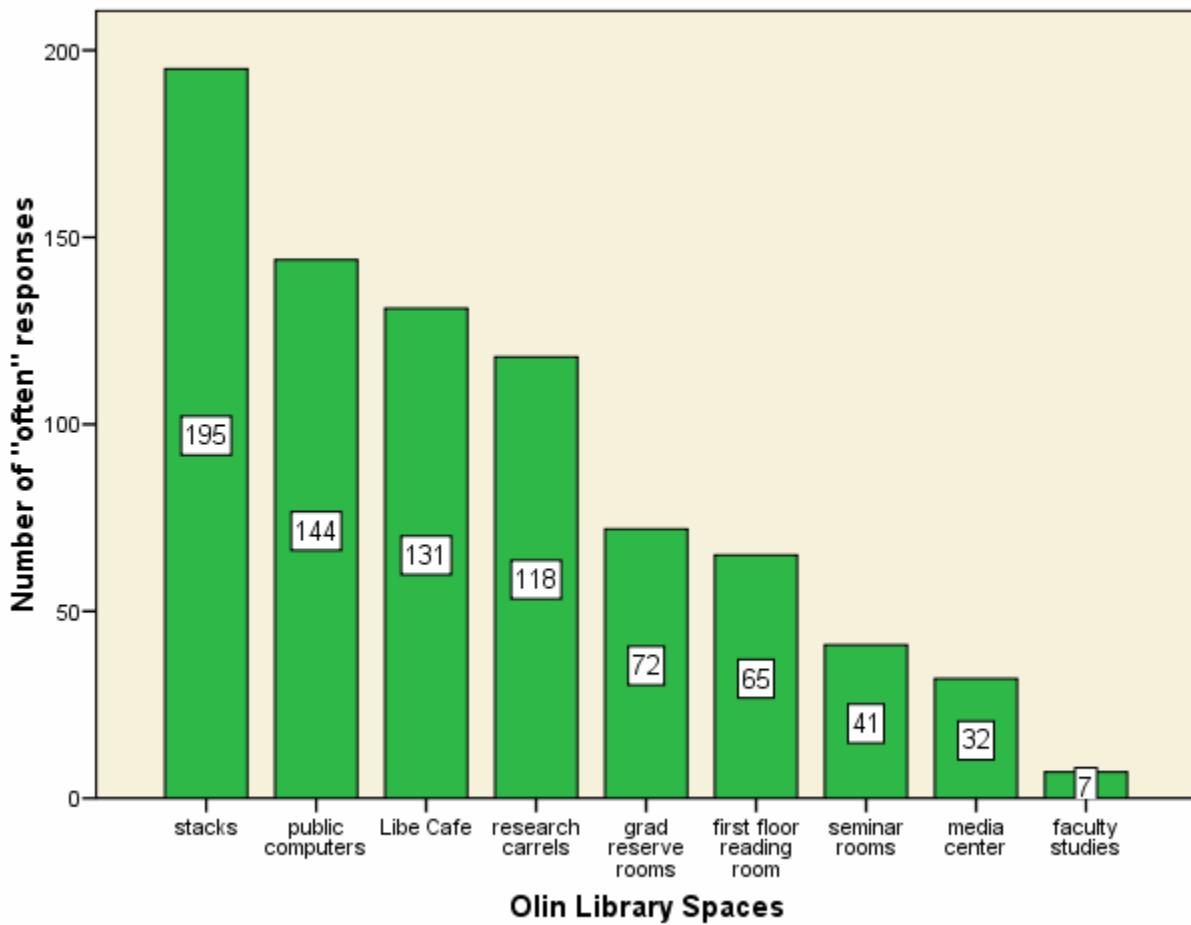
Which **spaces** are used the most often? Which are used the least often?
Which **functions** are used the most often? Which are used the least often?
What **improvements** are most requested?
How do Graduate Students **compare** to other groups?

**Please refer to the survey instrument for more details about the questions.
1066 surveys were submitted. Graduate Students submitted 285 surveys (27.2%).**

Graduate Students Results

Which *spaces* are used the most often?

Number of times "often" was reported on question 5:
How often do you use the following Olin Library spaces?

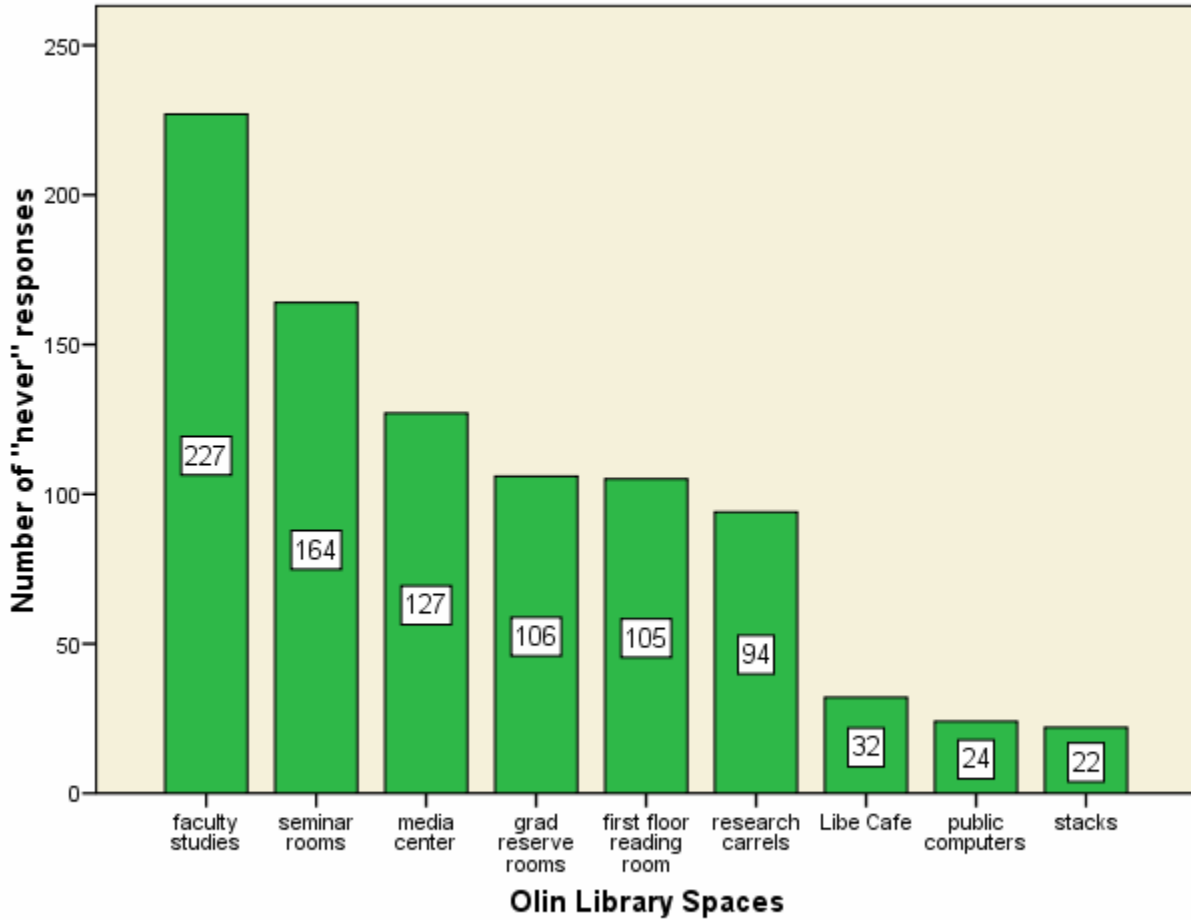


Note: There were a total of 1066 surveys submitted from Undergraduate students: 673 (64.3%), Graduate students: 285 (27.2%), Faculty: 45 (4.3%), and Staff/Others: 44 (4.2%).

Graduate Students Results

Which *spaces* are used the least often?

Number of times "never" was reported on question 5:
How often do you use the following Olin Library spaces?

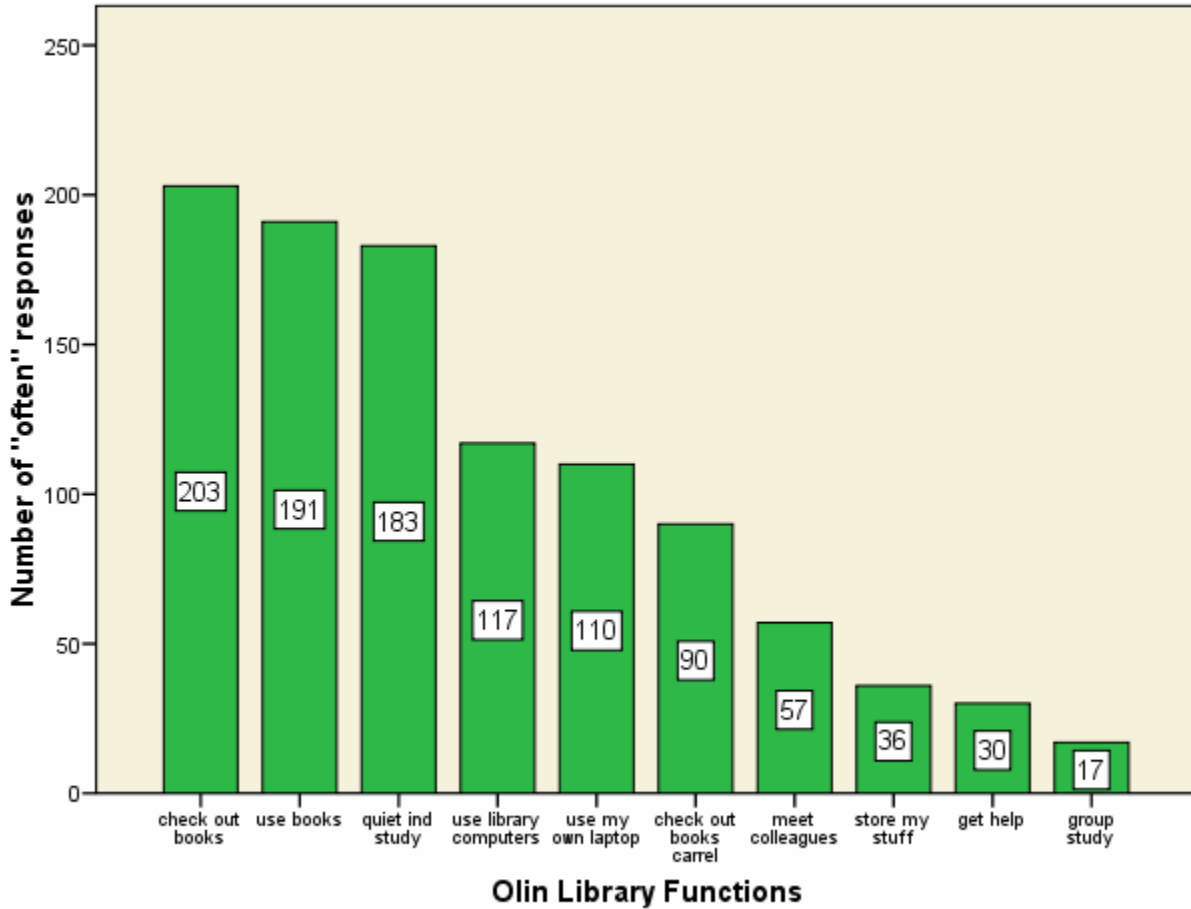


Note: There were a total of 1066 surveys submitted from Undergraduate students: 673 (64.3%), Graduate students: 285 (27.2%), Faculty: 45 (4.3%), and Staff/Others: 44 (4.2%).

Graduate Students Results

Which *functions* are used the most often?

Number of times "often" was reported on question 6:
How often do you use Olin Library for the following functions?

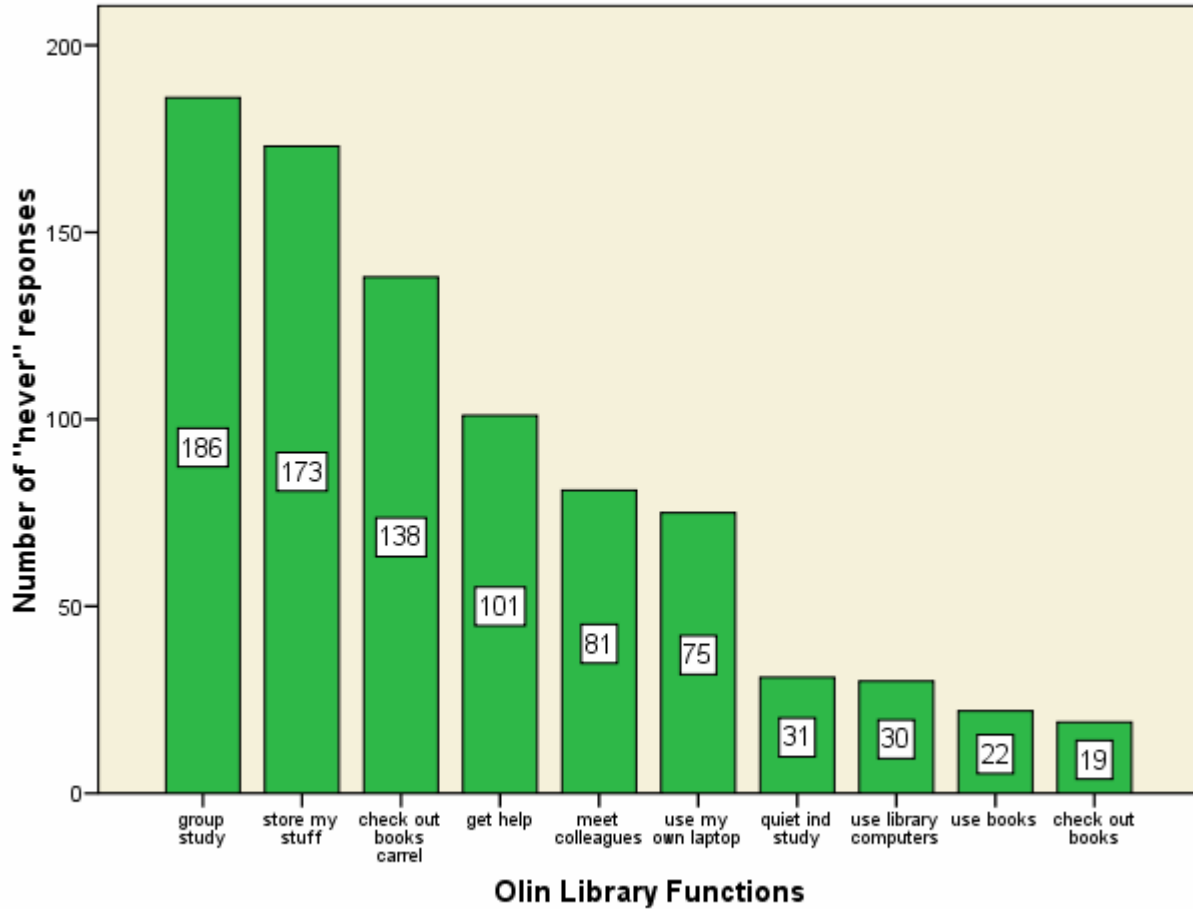


Note: There were a total of 1066 surveys submitted from Undergraduate students: 673 (64.3%), Graduate students: 285 (27.2%), Faculty: 45 (4.3%), and Staff/Others: 44 (4.2%).

Graduate Students Results

Which *functions* are used the least often?

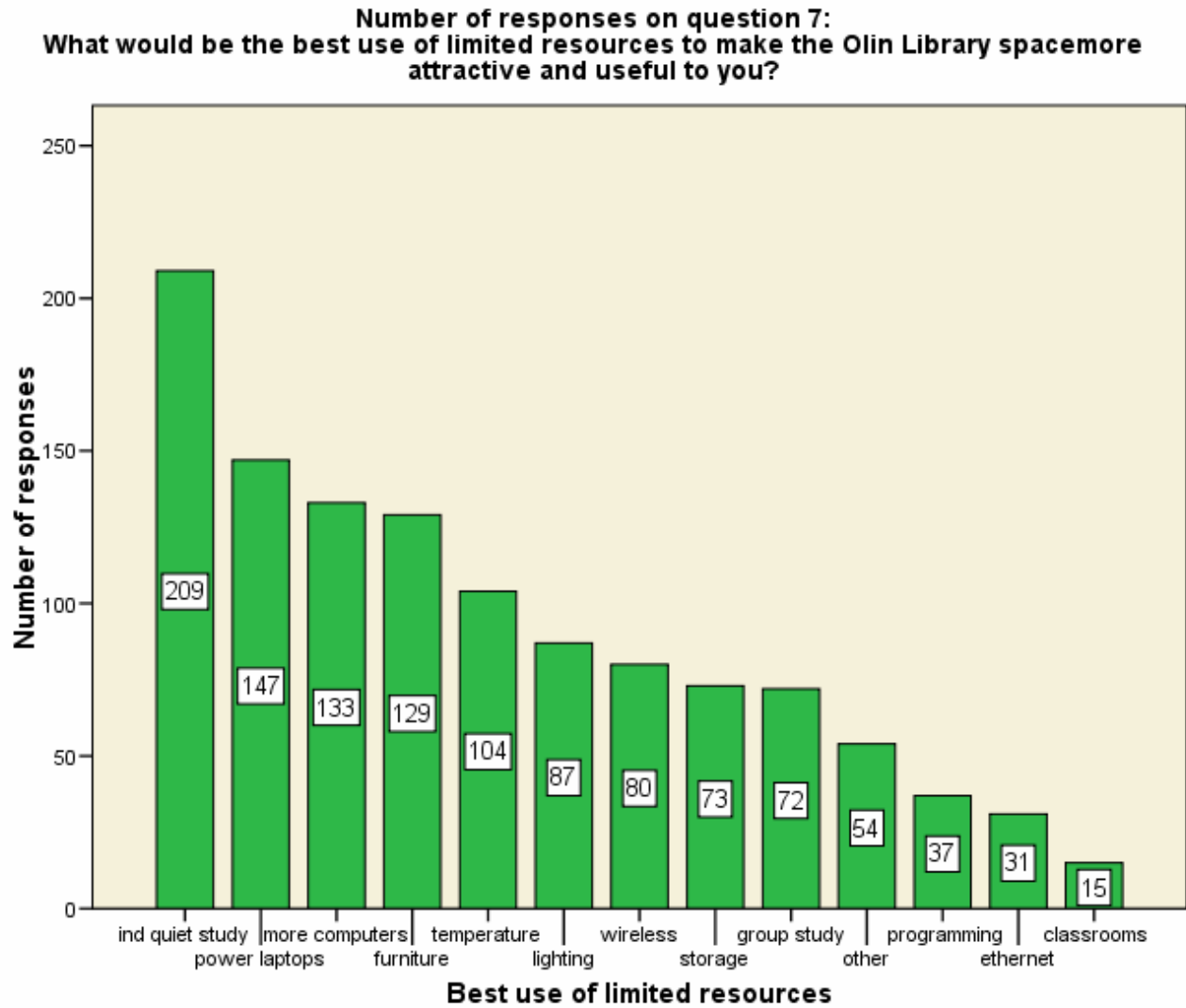
Number of times "never" was reported on question 6:
How often do you use Olin Library for the following functions?



Note: There were a total of 1066 surveys submitted from Undergraduate students: 673 (64.3%), Graduate students: 285 (27.2%), Faculty: 45 (4.3%), and Staff/Others: 44 (4.2%).

Graduate Students Results

What *improvements* are most requested?

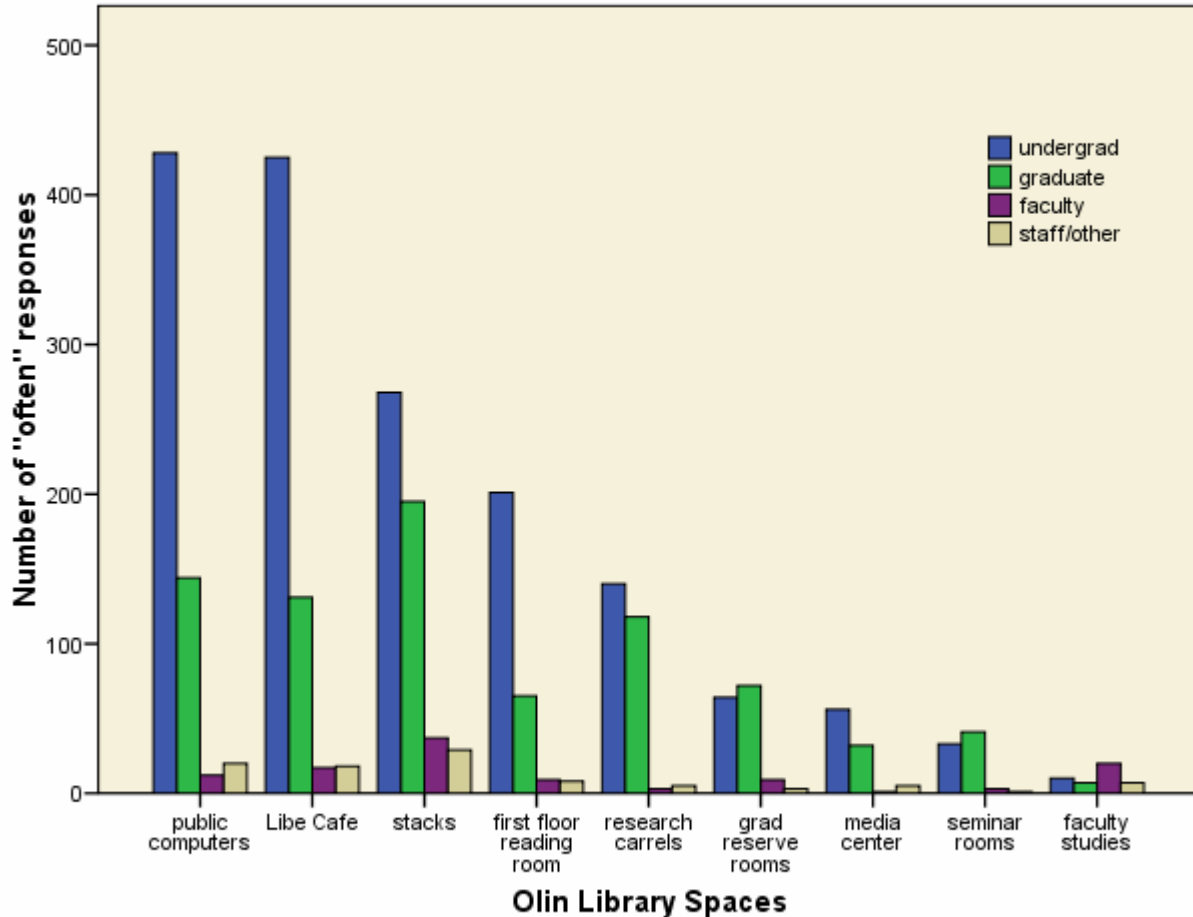


Note: There were a total of 1066 surveys submitted from Undergraduate students: 673 (64.3%), Graduate students: 285 (27.2%), Faculty: 45 (4.3%), and Staff/Others: 44 (4.2%).

Group comparison

How do Grads compare to other groups: which *spaces* are used the most often?

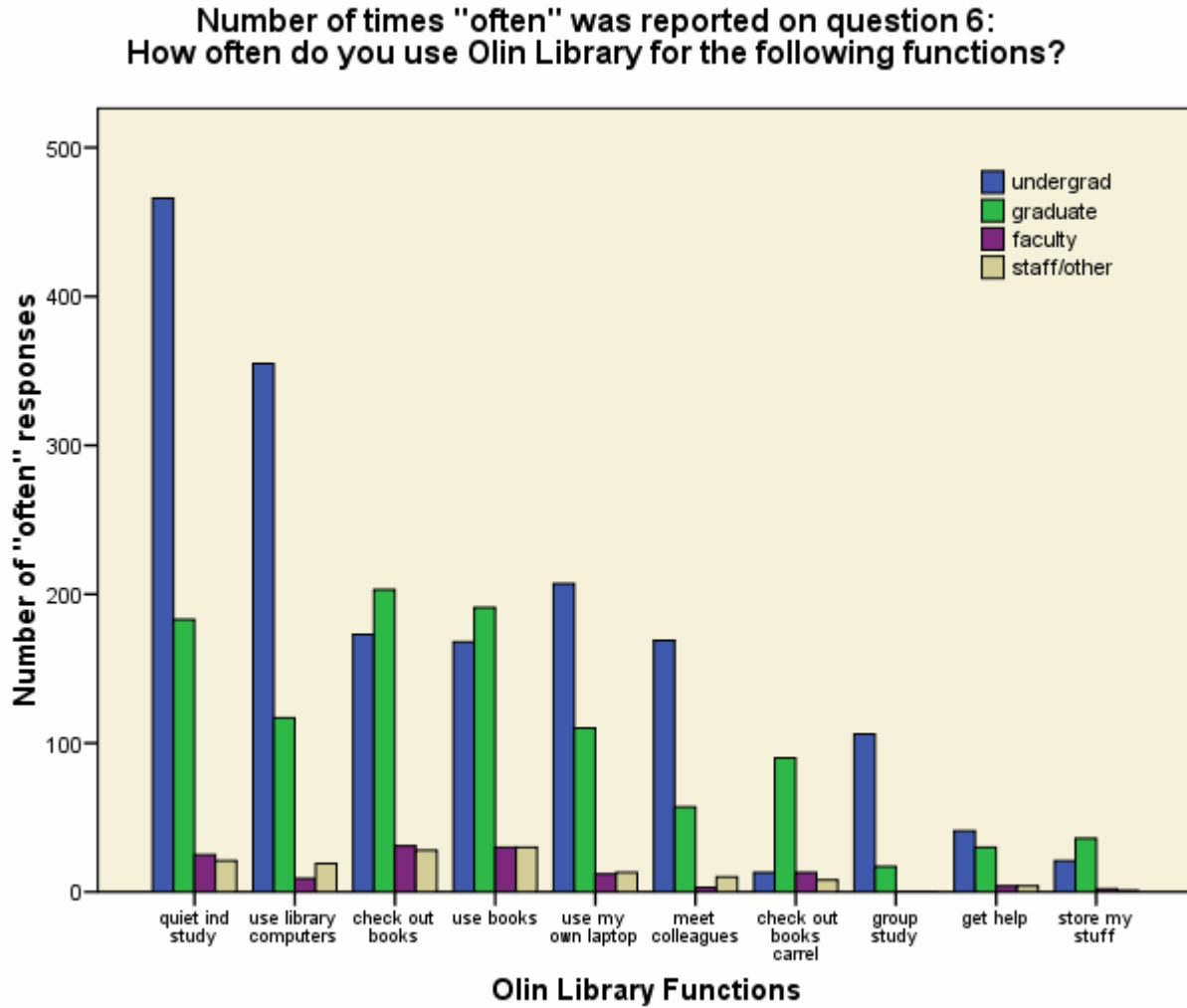
**Number of times "often" was reported on question 5:
How often do you use the following Olin Library spaces?**



Olin Library Spaces	Group				Total
	undergrad	graduate	faculty	staff/other	
public computers	428 (70.9%)	144 (23.8%)	12 (2.0%)	20 (3.3%)	604
Libe Cafe	425 (71.9%)	131 (22.2%)	17 (2.9%)	18 (3.0%)	591
stacks	268 (50.7%)	195 (36.9%)	37 (7.0%)	29 (5.5%)	529
first floor reading room	201 (71.0%)	65 (23.0%)	9 (3.2%)	8 (2.8%)	283
research carrels	140 (52.6%)	118 (44.4%)	3 (1.1%)	5 (1.9%)	266
grad reserve rooms	64 (43.2%)	72 (48.6%)	9 (6.1%)	3 (2.0%)	148
media center	56 (59.6%)	32 (34.0%)	1 (1.1%)	5 (5.3%)	94
seminar rooms	33 (42.3%)	41 (52.6%)	3 (3.8%)	1 (1.3%)	78
faculty studies	10 (22.7%)	7 (15.9%)	20 (45.5%)	7 (15.9%)	44

Group comparison

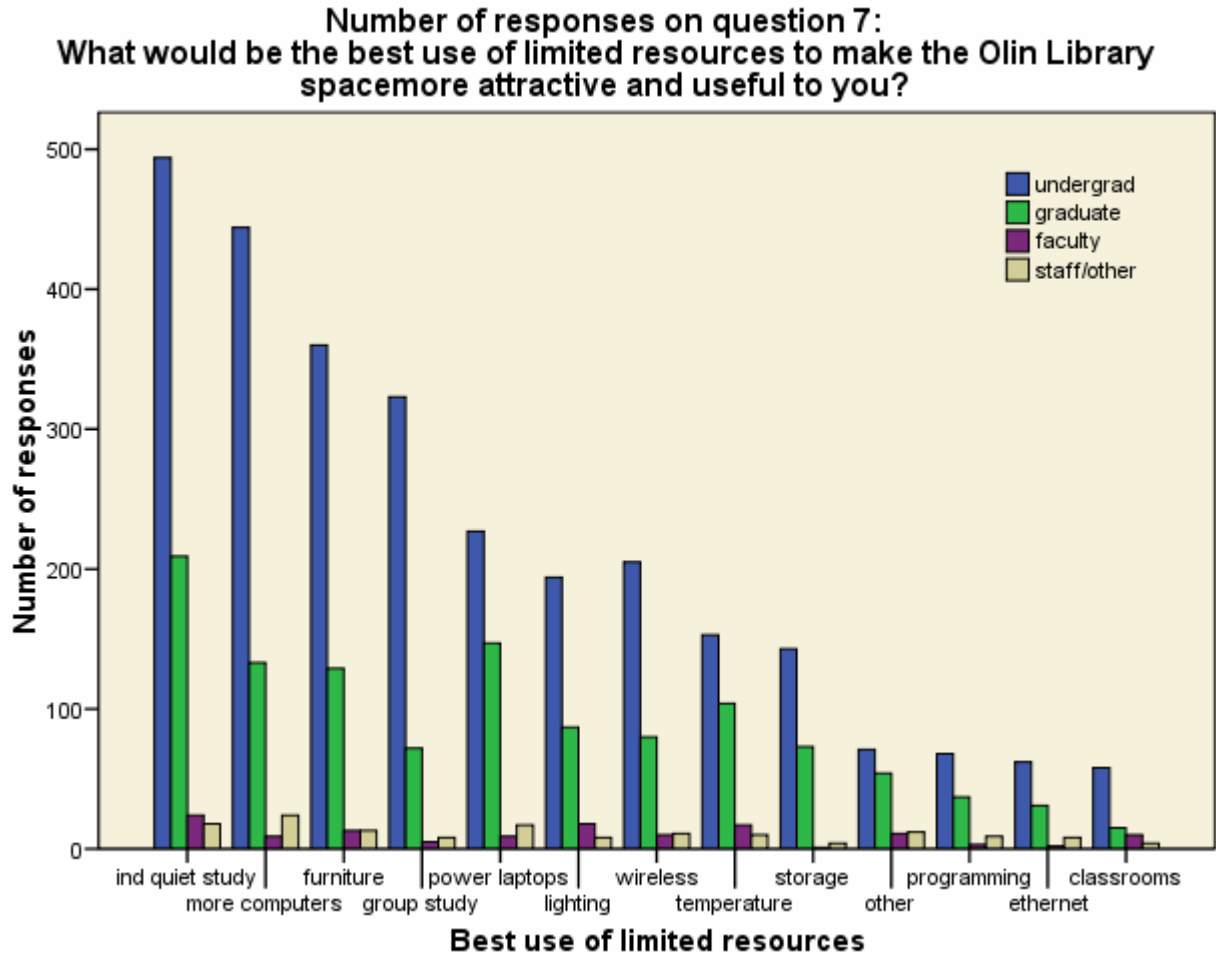
How do Grads compare to other groups: which *functions* are used the most often?



Olin Library Spaces	Group				Total
	undergrad	graduate	faculty	staff/other	
quiet ind study	466 (67.1%)	183 (26.3%)	25 (3.6%)	21 (3.0%)	695
use library computers	355 (71.0%)	117 (23.4%)	9 (1.8%)	19 (3.8%)	500
check out books	173 (39.8%)	203 (46.7%)	31 (7.1%)	28 (6.4%)	435
use books	168 (40.1%)	191 (45.6%)	30 (7.2%)	30 (7.2%)	419
use my own laptop	207 (60.5%)	110 (32.2%)	12 (3.5%)	13 (3.8%)	342
meet colleagues	169 (70.7%)	57 (23.8%)	3 (1.3%)	10 (4.2%)	239
check out books carrel	13 (10.5%)	90 (72.6%)	13 (10.5%)	8 (6.5%)	124
group study	106 (86.2%)	17 (13.8%)	0 (0%)	0 (0%)	123
get help	41 (51.9%)	30 (38.0%)	4 (5.1%)	4 (5.1%)	79
store my stuff	21 (35.0%)	36 (60.0%)	2 (3.3%)	1 (1.7%)	60

Group comparison

How do Grads compare to other groups: *improvements* most requested?



Olin Library Spaces	Group				Total
	undergrad	graduate	faculty	staff/other	
ind quiet study	494 (66.3%)	209 (28.1%)	24 (3.2%)	18 (2.4%)	745
more computers	444 (72.8%)	133 (21.8%)	9 (1.5%)	24 (3.9%)	610
furniture	360 (69.9%)	129 (25.0%)	13 (2.5%)	13 (2.5%)	515
group study	323 (79.2%)	72 (17.6%)	5 (1.2%)	8 (2.0%)	408
power laptops	227 (56.8%)	147 (36.8%)	9 (2.3%)	17 (4.3%)	400
lighting	194 (63.2%)	87 (28.3%)	18 (5.9%)	8 (2.6%)	307
wireless	205 (67.0%)	80 (26.1%)	10 (3.3%)	11 (3.6%)	306
temperature	153 (53.9%)	104 (36.6%)	17 (6.0%)	10 (3.5%)	284
storage	143 (64.7%)	73 (33.0%)	1 (.5%)	4 (1.8%)	221
other	71 (48.0%)	54 (36.5%)	11 (7.4%)	12 (8.1%)	148
programming	68 (58.1%)	37 (31.6%)	3 (2.6%)	9 (7.7%)	117
ethernet	62 (60.2%)	31 (30.1%)	2 (1.9%)	8 (7.8%)	103
classrooms	58 (66.7%)	15 (17.2%)	10 (11.5%)	4 (4.6%)	87