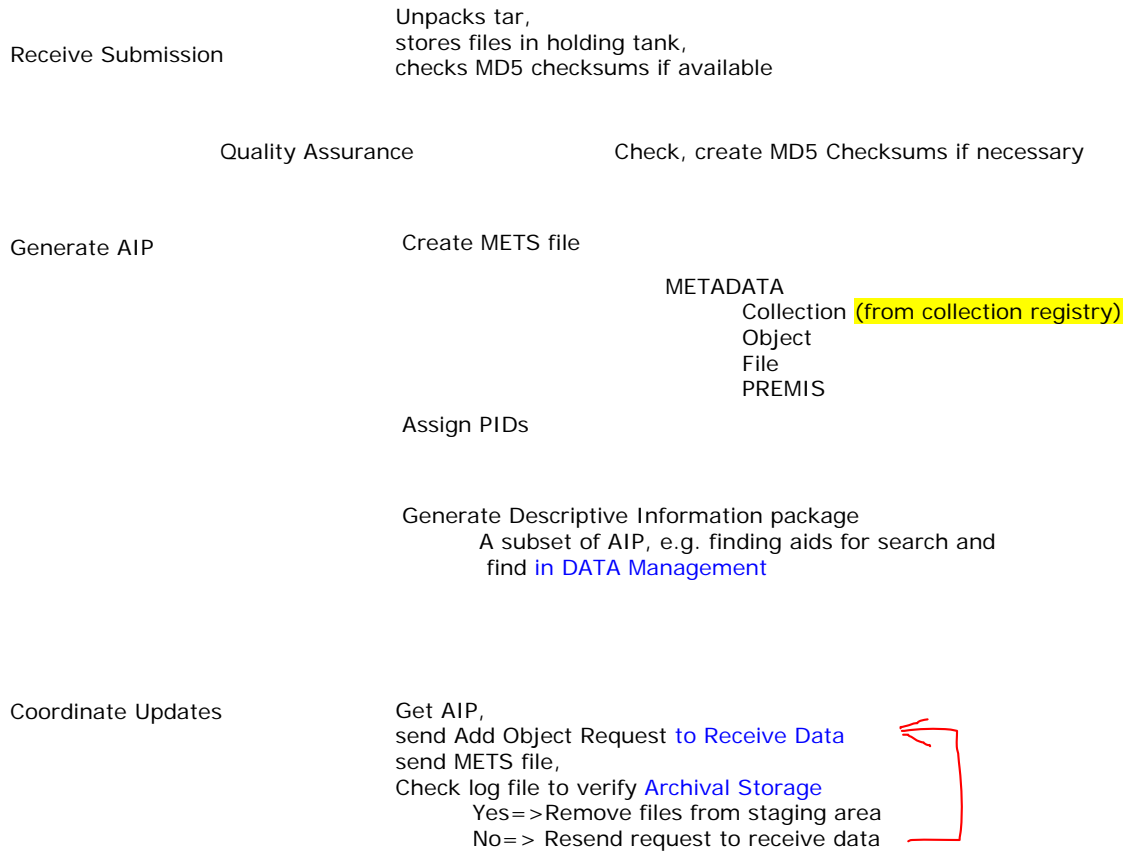


Ingest Modules



Archival Storage

Receive Data

Read Mets File [from Coordinate Updates](#)
Extract filenames
Write condition code to log

Error Checking

Check MD5 Checksum
Write condition code to [log](#)

Manage Storage Hierarchy

File locations depending on Security, Assurance, and proximity levels in Admin Policies
? Generate flat files of databases periodically--should this be in db management, admin?
★ AIPs have high proximity

Data Management

Receive Database Updates

From [Generate Descriptive Metadata in Ingest](#)

Generate Report

Receive requests [from Admin Manage System Configuration](#)
Objects in the system
Error messages from file checks

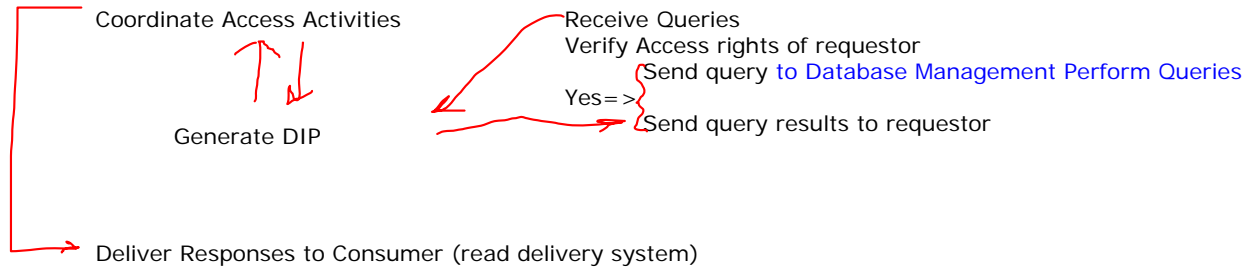
Perform Queries



Receive search queries [from Access](#)
Send results of queries [to Access](#)

Administer Database

Access Modules



Object Registry

- Original object names
- Their pids
- ? Collection metadata?
- ? What else

Administration



AIP updates

Audit Submission

Negotiate Submission Agreement

Preservation Planning

Develop Packaging Design and Migration Plans

Develop Preservation Strategies and Standards

Monitor Designated Community

Monitor Technology

NB highlighted functions require high degree of human intervention